

Input 5598

Fossil 1475

Specifications

Contents

94% post-consumer recycled polyester
6% pre-consumer recycled polyester

Weight

11.1 ± 1.0 oz./lin. yd.

Width

54" min. useable

Repeat

2.5" vertical | 12.25" horizontal

Treatment

none

Backing

none

Cleaning Code

Standard Care Label W-S. Clean with water based cleaning agents, foam or pure, water free solvents. Vacuuming or light brushing is recommended to prevent dust and soil buildup. May be cleaned with a 10% bleach-to-water solution. Rinse well after cleaning. May also be disinfected with hydrogen peroxide, alcohol, and quaternary ammonium (quat) based cleaners. Read the [Cleaning & Disinfection Handbook](https://www.guilfordofmaine.com/system/res/28/original/Guilford_of_Maine_-_Cleaning_Disinfection_Handbook.pdf?1596642657).

Performance



Breaking Strength (ASTM D5034)

290 lbf min. warp and 250 lbf min. fill

Tear (ASTM D2261)

15 lbf min. warp and 30 lbf min. fill

Seam Slippage (ASTM D4034)

110 lbf warp and 75 lbf fill

Pilling resistance (ASTM D3511)

Class 4 min.

Colorfastness to light (AATCC 16.3 Option 3)

Grade 4 min. at 40 hours

Colorfastness to crocking (AATCC 8)

Grade 4 min. dry & Grade 3 min. wet

Wyzenbeek Abrasion resistance (ASTM D4157)

100,000 double rubs cotton duck

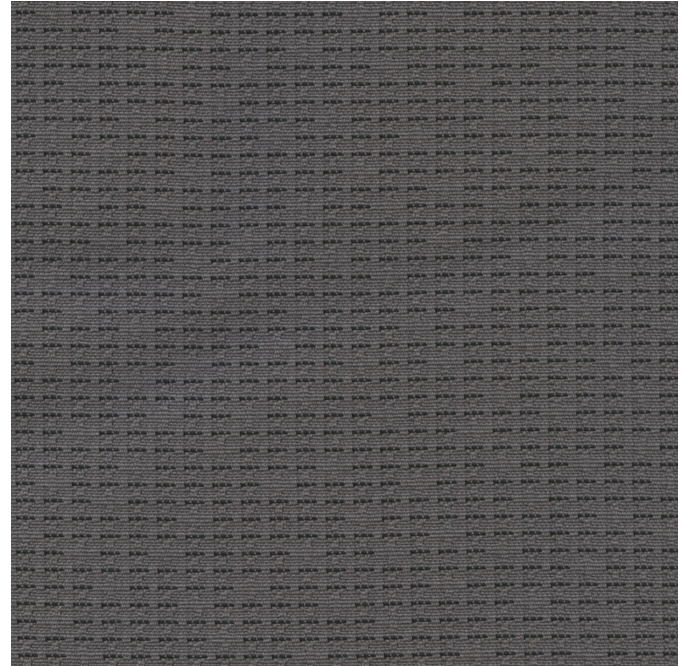
Flammability

CA Technical Bulletin 117-2013 Section 1

Miscellaneous

Proudly woven in North America supporting our local communities.

Application testing of this product is recommended.
Colors may vary between dye lots. This is a directional fabric.



Terratec is a registered trademark of Duvaltex and designates fabrics that are made from 100% recycled or compostable material using increasingly sustainable manufacturing practices to produce a high quality product that is recyclable at the end of its useful life.