

# Crosstown 2526

Fieldstone 060

## Specifications

### Contents

77% pre-consumer recycled polyester  
23% post-consumer recycled polyester

### Weight

13.6 ± 1.0 oz./lin. yd.

### Width

66" min. useable

### Repeat

12.5" vertical, 16.2" horizontal  
Random match

### Treatment

none

### Backing

none

## Cleaning Code

<p>Standard Care Label W-S. Clean with water based cleaning agents, foam or pure, water free solvents. Vacuuming or light brushing is recommended to prevent dust and soil buildup. May also be disinfected with hydrogen peroxide, alcohol, and quaternary ammonium (quat) based cleaners.</p>

## Performance



### Breaking Strength (ASTM D5034)

250 lbf min. warp and 150 lbf min. fill

### Tear (ASTM D2261)

35 lbf min. warp and 25 lbf min. fill

### Colorfastness to light (AATCC 16.3 Option 3)

Grade 4 min. at 40 hours

### Colorfastness to crocking (AATCC 8)

Grade 4 min. dry & Grade 3 min. wet

### Flammability

ASTM E84 Class I or A

### NRC of anechoic termination

1.00

### NRC of fabric in front of anechoic termination

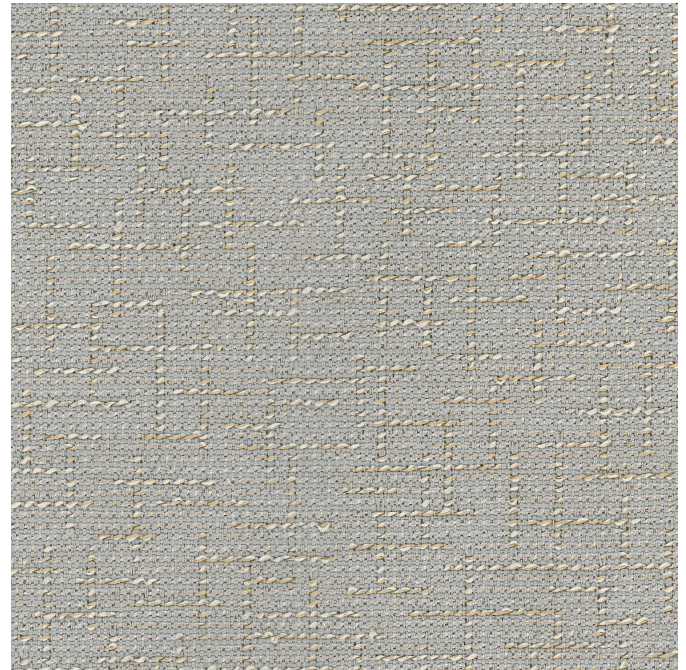
.95

## Miscellaneous

Every effort has been made to ensure color accuracy of the digital images, however, please order a sample before specification. Application testing of this product is recommended. Colors may vary between dye lots. This is a directional fabric.

Proudly woven in North America supporting our local communities.

Pre-Approved: Haworth, Herman Miller, HNI, Kimball, Steelcase and Trendway.



Terratec is a registered trademark of Duvaltex and designates fabrics that are made from 100% recycled or compostable material using increasingly sustainable manufacturing practices to produce a high quality product that is recyclable at the end of its useful life.



This pattern is included in the underwriters laboratory panel fabric recognition program. Additional testing of this U.L. recognized fabric is not required on approved panels from participating manufacturers.



Guilford of Maine

The plot below summarizes impedance tube measurements of absorption of an anechoic termination and various fabrics in front of the anechoic termination.

