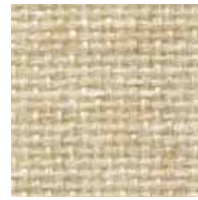


Movers & Shakers

Panel
Acoustic



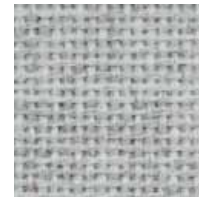
FR701
2100-380



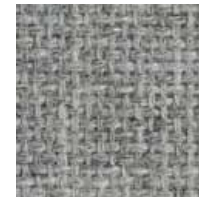
FR701
2100-130



FR701
2100-758



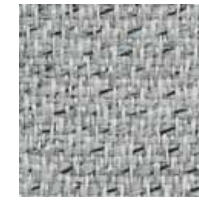
FR701
2100-538



FR701
2100-238



Lido
2858-024



Lido
2858-023



Lido
2858-019



Lido
2858-030



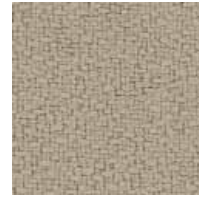
Lido
2858-065



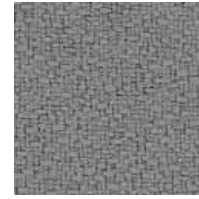
Anchorage
2335-2129



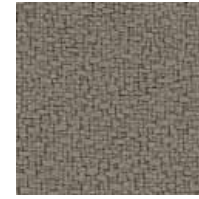
Anchorage
2335-2130



Anchorage
2335-2035



Anchorage
2335-2053



Anchorage
2335-2049



Spinel
3582-050



Spinel
3582-011



Spinel
3582-015



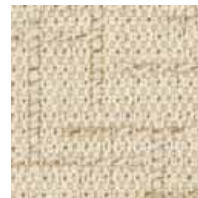
Spinel
3582-070



Spinel
3582-030



Crosstown
2526-050



Crosstown
2526-030



Crosstown
2526-080



Crosstown
2526-060



Crosstown
2526-010



Reeds
3078-010



Reeds
3078-040



Reeds
3078-041



Reeds
3078-050



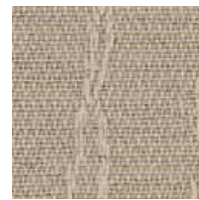
Reeds
3078-051



Coastline
3495-020



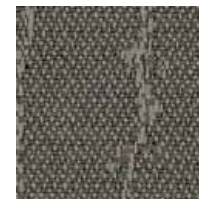
Coastline
3495-032



Coastline
3495-040



Coastline
3495-081



Coastline
3495-080



Mingle
2527-040



Mingle
2527-060



Mingle
2527-090



Mingle
2527-070



Mingle
2527-020



Rattan
3087-020



Rattan
3087-021



Rattan
3087-050



Rattan
3087-051



Rattan
3087-060



Drift
2539-050



Drift
2539-032



Drift
2539-010



Drift
2539-041



Drift
2539-040



Bailey
2299-7011



Bailey
2299-7010



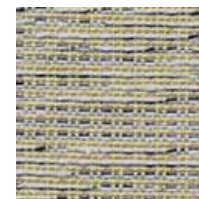
Bailey
2299-7040



Bailey
2299-7024



Bailey
2299-7047



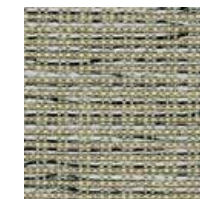
Tempest
2120-030



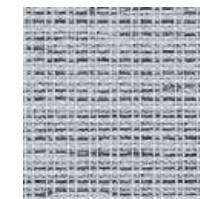
Tempest
2120-021



Tempest
2120-023



Tempest
2120-020



Tempest
2120-031

Guilford of Maine

guilfordofmaine.com

800 544 0200 Customer Care
616 554 2255 Fax

11/13

Movers & Shakers

Panel
Acoustic

Specifications

Content	
FR701	100% post-consumer recycled polyester
Anchorage	35% post-consumer recycled polyester 65% pre-consumer recycled polyester
Crosstown	23% post-consumer recycled polyester 77% pre-consumer recycled polyester
Coastline	34% post-consumer recycled polyester 66% pre-consumer recycled polyester
Rattan	34% post-consumer recycled polyester 66% pre-consumer recycled polyester
Bailey	100% recycled polyester
Lido	48% post-consumer recycled polyester 52% pre-consumer recycled polyester
Spinel	32% post-consumer recycled polyester 68% pre-consumer recycled polyester
Reeds	74% post-consumer recycled polyester 26% pre-consumer recycled polyester
Mingle	23% post-consumer recycled polyester 77% pre-consumer recycled polyester
Drift	51% post-consumer recycled polyester 49% pre-consumer recycled polyester
Tempest	27% post-consumer recycled polyester 73% pre-consumer recycled polyester

Width

66" min. useable

Cleaning Code

W-S

Performance



Miscellaneous

Proudly woven in the USA supporting our local communities.
Colors may vary slightly between dye lots.
These are directional fabrics except FR701.
Application testing of these products is recommended.

Visit guilfordofmaine.com for complete specs and samples.



Terratex is a registered trademark of True Textiles, Inc. and designates fabrics that are made from 100% recycled or compostable material using increasingly sustainable manufacturing practices to produce a high quality product that is recyclable at the end of its useful life.



CO₂ emissions from 100% of the electricity used by the manufacturer to produce these products have been measured and offset in accordance with The CarbonNeutral Protocol.



These patterns are included in the underwriters laboratory panel fabric recognition program. Additional testing of these U.L. recognized component fabrics is not required on approved panels from participating manufacturers.

ACT registered certification marks.