

Off the Grid 1233

Earthglow 1309

Specifications

Contents

49% pre-consumer recycled polyester
38% post-consumer recycled polyester
13% polyester

Weight

10.0 ± 1.0 oz./lin. yd.

Width

66" min. useable

Repeat

none

Treatment

polyester binder

Backing

none

Treatment

polyester binder

Cleaning Code

<p>Standard Care Label W-S. Clean with water based cleaning agents, foam or pure, water free solvents. Vacuuming or light brushing is recommended to prevent dust and soil buildup. May also be disinfected with hydrogen peroxide, alcohol, and quaternary ammonium (quat) based cleaners.</p>

Performance



Breaking Strength (ASTM D5034)

185 lbf min. warp and 165 lbf min. fill

Tear (ASTM D2261)

25 lbf min. warp and fill

Colorfastness to light (AATCC 16.3 Option 3)

Grade 4 min. at 40 hours

Colorfastness to crocking (AATCC 8)

Grade 4 min. dry & Grade 3 min. wet

Flammability

ASTM E84 Class I or A

NRC of anechoic termination

1.00

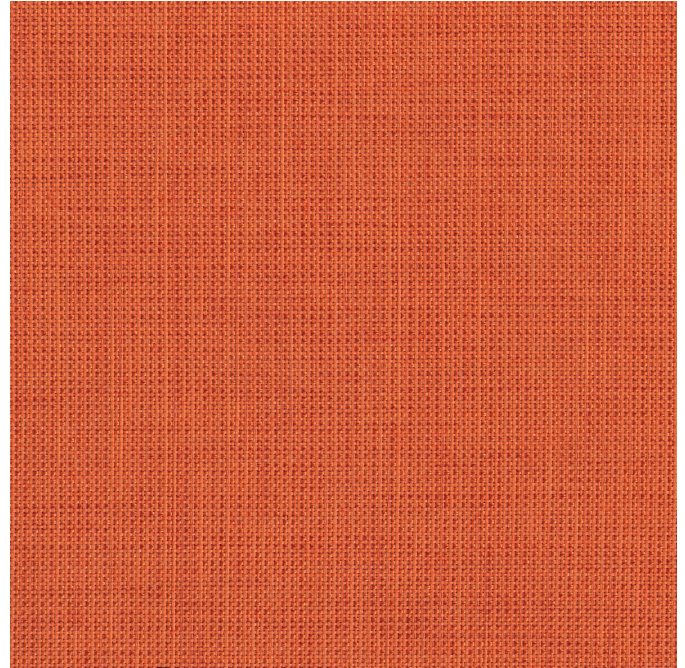
NRC of fabric in front of anechoic termination

1.00

Miscellaneous

Proudly woven in North America supporting our local communities.

Application testing of this product is recommended.
Colors may vary between dye lots. This is a directional fabric.



This pattern is included in the underwriters laboratory panel fabric recognition program. Additional testing of this U.L. recognized fabric is not required on approved panels from participating manufacturers.



Guilford of Maine

The plot below summarizes impedance tube measurements of absorption of an anechoic termination and various fabrics in front of the anechoic termination.

