

# Poseidon 1306

Coralline 1294

## Specifications

### Contents

90% post-consumer recycled polyester including ocean waste  
10% polyester

### Weight

18 ± 1.0 oz./lin. yd

### Width

54" min. useable

### Repeat

none

### Treatment

### Backing

## Cleaning Code

<p>Standard Care Label W-S. Clean with water based<br />cleaning agents, foam or pure, water free solvents.<br />Vacuuming or light brushing is recommended to<br />prevent dust and soil buildup. May also be disinfected<br />with hydrogen peroxide, alcohol, and quaternary<br />ammonium (quat) based cleaners.</p>

## Performance



### Breaking Strength (ASTM D5034)

480 lbf min. warp and 360 lbf min. fill

### Tear (ASTM D2261)

min. warp and fill

### Seam Slippage (ASTM D4034)

105 lbf min. warp and 78 lbf min. fill

### Pilling resistance (ASTM D3511)

Class 4 min.

### Colorfastness to light (AATCC 16.3 Option 3)

Grade 4 min. at 40 hours

### Colorfastness to crocking (AATCC 8)

Grade 4 min. dry & Grade 4 min. wet

### Wyzenbeek Abrasion resistance (ASTM D4157)

100,000 double rubs min. cotton duck

### Flammability

CA Technical Bulletin 117-2013 Section 1  
NFPA 260-2013 Class I

### NRC of anechoic termination

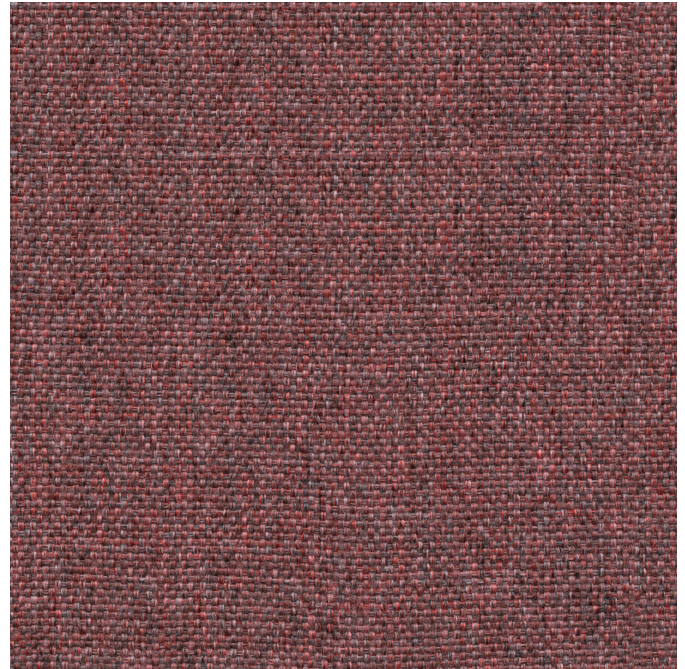
1.00

### NRC of fabric in front of anechoic termination

.90

## Miscellaneous

Proudly woven in North America supporting our local communities.



This pattern is included in the underwriters laboratory panel fabric recognition program. Additional testing of this U.L. recognized fabric is not required on approved panels from participating manufacturers.



**Guilford of Maine**