

# Blink 1577

Ember 6281

## Specifications

### Contents

88% pre-consumer recycled polyester  
12% post-consumer recycled polyester

### Weight

10.4 ± 1.0 oz./lin. yd.

### Width

54" min. useable

### Repeat

.23" vertical | .35" horizontal

### Treatment

none

### Backing

none

## Cleaning Code

<p>Standard Care Label W-S. Clean with water based cleaning agents, foam or pure, water free solvents. Vacuuming or light brushing is recommended to prevent dust and soil buildup. May also be disinfected with hydrogen peroxide, alcohol, and quaternary ammonium (quat) based cleaners.</p>

## Performance



### Breaking Strength (ASTM D5034)

210 lbf min. warp and 110 lbf min. fill

### Tear (ASTM D2261)

30 lbf min. warp and 25 lbf min. fill

### Seam Slippage (ASTM D4034)

60 lbf warp and 35 lbf fill

### Pilling resistance (ASTM D3511)

Class 4

### Colorfastness to light (AATCC 16.3 Option 3)

Grade 4 min. at 40 hours

### Colorfastness to crocking (AATCC 8)

Grade 4 min. dry & Grade 3 min. wet

### Wyzenbeek Abrasion resistance (ASTM D4157)

100,000 double rubs cotton duck

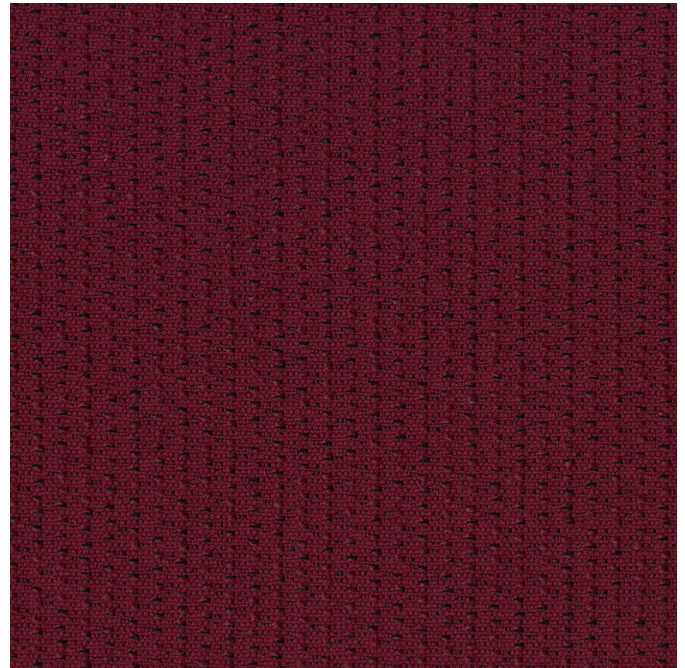
### Flammability

CA Technical Bulletin 117-2013 Section 1

## Miscellaneous

Proudly woven in North America supporting our local communities.

Application testing of this product is recommended. Colors may vary between dye lots. This is a directional fabric.



Terratek is a registered trademark of Duvaltex and designates fabrics that are made from 100% recycled or compostable material using increasingly sustainable manufacturing practices to produce a high quality product that is recyclable at the end of its useful life.



**Guilford of Maine**