

Dune 4505

Caribbean 6658

Specifications

Contents

100% polyester

Weight

11.0 ± 1.0 oz./lin. yd.

Width

66" min. useable

Repeat

16.4" vertical | 13.9" horizontal
Random match

Treatment

Backing

Cleaning Code

<p>Standard Care Label W-S. Clean with water based cleaning agents, foam or pure, water free solvents. Vacuuming or light brushing is recommended to prevent dust and soil buildup. May also be disinfected with hydrogen peroxide, alcohol, and quaternary ammonium (quat) based cleaners.</p>

Performance



Breaking Strength (ASTM D5034)

160 lbf min. warp and 110 lbf min. fill

Tear (ASTM D2261)

20 lbf min. warp and fill

Colorfastness to light (AATCC 16.3 Option 3)

Grade 4 min. at 40 hours

Colorfastness to crocking (AATCC 8)

Grade 4 min. dry & Grade 3 min. wet

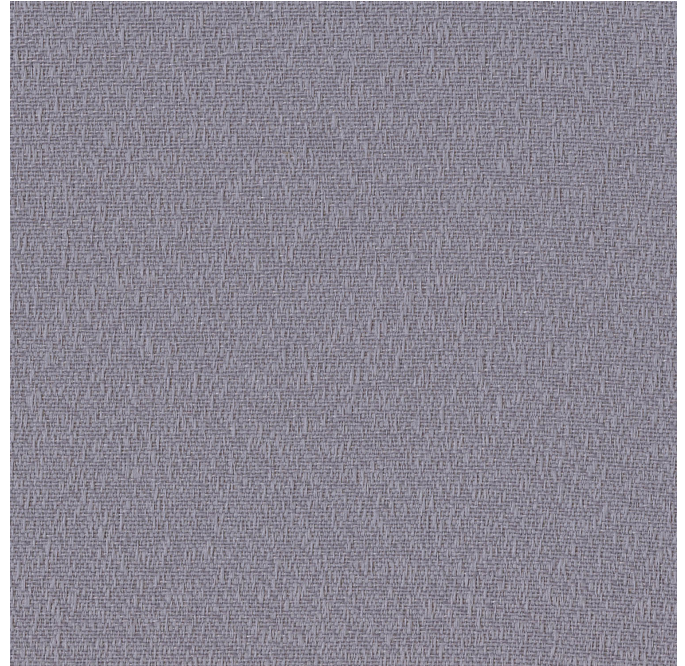
Flammability

ASTM E84 Class I or A

Miscellaneous

Proudly woven in North America supporting our local communities.

Application testing of this product is recommended.
Colors may vary between dye lots. This is a directional fabric.



Guilford of Maine