

# Input 5598

Pine 1478

## Specifications

### Contents

94% post-consumer recycled polyester  
6% pre-consumer recycled polyester

### Weight

10.1 ± 1.0 oz./lin. yd.

### Width

54" min. useable

### Repeat

2.5" vertical | 12.25" horizontal

### Treatment

none

### Backing

none

## Cleaning Code

Standard Care Label W-S. Clean with water based cleaning agents, foam or pure, water free solvents. Vacuuming or light brushing is recommended to prevent dust and soil buildup. May be cleaned with a 10% bleach-to-water solution. Rinse well after cleaning. May also be disinfected with hydrogen peroxide, alcohol, and quaternary ammonium (quat) based cleaners. Read the [Cleaning & Disinfection Handbook](https://www.guilfordofmaine.com/system/res/28/original/Guilford_of_Maine_-_Cleaning_Disinfection_Handbook.pdf?1596642657)

## Performance



### Breaking Strength (ASTM D5034)

290 lbf min. warp and 250 lbf min. fill

### Tear (ASTM D2261)

15 lbf min. warp and 30 lbf min. fill

### Seam Slippage (ASTM D4034)

110 lbf warp and 75 lbf fill

### Pilling resistance (ASTM D3511)

Class 4 min.

### Colorfastness to light (AATCC 16.3 Option 3)

Grade 4 min. at 40 hours

### Colorfastness to crocking (AATCC 8)

Grade 4 min. dry & Grade 3 min. wet

### Wyzenbeek Abrasion resistance (ASTM D4157)

100,000 double rubs cotton duck

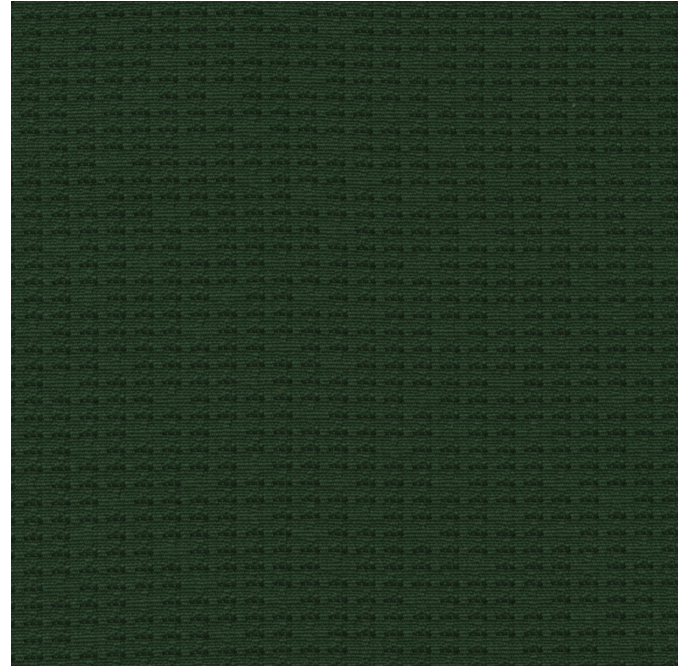
### Flammability

CA Technical Bulletin 117-2013 Section 1

## Miscellaneous

Proudly woven in North America supporting our local communities.

Application testing of this product is recommended.  
Colors may vary between dye lots. This is a directional fabric.



Terratec is a registered trademark of Duvaltex and designates fabrics that are made from 100% recycled or compostable material using increasingly sustainable manufacturing practices to produce a high quality product that is recyclable at the end of its useful life.